

I worked with the following classmates:

NAME \_\_\_\_\_

\_\_\_\_\_

\_\_\_\_\_

Invertebrate Paleontology Lab  
Quiz 5 (5<sup>th</sup> of 6) 20 points

1A This is the fossilized molt of a trilobite \_\_\_\_\_ (circle the correct answer)

pygidium      telson      cephalon      thorax      siphuncle

1B. Most trilobites were (circle the correct answer)

Marine benthic arthropods      Nonmarine benthic arthropods      Planktonic marine arthropods

2A. This marine assemblage is typical of the \_\_\_\_\_ Era.

2B. Circle the best group of 3 terms that fits this sample:

inner shelf	slope	rocky intertidal
clean water	muddy water	high wave energy
Ordovician Period	Permian Period	Cretaceous Period

3A. This is the fossilized molt of a trilobite \_\_\_\_\_ (circle the correct answer)

pygidium      telson      cephalon      thorax      siphuncle

3B The mound located between the eyes on this specimen is the (circle the correct answer)

Genal angle      Glabella      phragmocone      rostrum

4A. This fossil trilobite has eyes that are (circle the correct answer)

Holochroal      Absent      Schizochroal      Vestigial

4B. Circle the best group of 3 terms that fits the eyes in this sample

Calcite crystals	Silica crystals	Calcite crystals
c-axis	c-axis	a-axis
exoskeleton	exoskeleton	exoskeleton

5A This marine assemblage is typical of the \_\_\_\_\_ Era.

5B Based on the members of this assemblage, the likely age of this assemblage is:

Ordovician Period      Devonian Period      Cretaceous Period      Tertiary Period

6A These are the fossilized molts of trilobite \_\_\_\_\_ (circle the correct answer)

pygidia      telsons      cephalons      thoraxes      siphuncles

6B A feature of trilobite evolution is the trend in lineages (circle the correct answer)

Towards increasing or decreasing segmentation      Towards highly specialized appendages

7A This fossil crustacean is of the Order \_\_\_\_\_, meaning 10 legs

7B Crustaceans often fuse the mineral \_\_\_\_\_ to their chitin exoskeleton

8A These are pieces of the shell of a common crustacean, the Cirripedia, known commonly as \_\_\_\_\_

8B Circle the best group of three terms that fits this sample:

Rock or hard substrate	silt and clay substrate	fine grained substrate
Marine	marine	fresh water
Planktonic larvae	benthic larvae	planktonic larvae

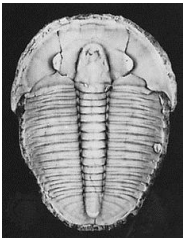
9A This fossil trilobite is a member of the order Agnostida. Its habitat was (circle the correct answer)

Marine benthos	Marine plankton (bathyal depths)	Nonmarine benthos
----------------	----------------------------------	-------------------

9B Circle the best group of three terms that fits this specimen:

Planktonic	benthonic	planktonic
Scavenger	detrital feeder	blind
Late Paleozoic	early Paleozoic	early Paleozoic

10A. This trilobite has characteristics of early Cambrian trilobites, including



(circle the correct group of terms)

Genal Spines	Genal spines	no genal spines
Large pygidium	small pygidium	large pygidium
Few thoracic segments	Many thoracic segments	Few thoracic segments

10B. The evolutionary trend that distinguishes the trilobite shown above from this one is: (circle one)



Size	fusion/reduction of segments	specialization of appendages
------	------------------------------	------------------------------