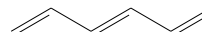
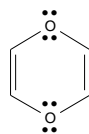
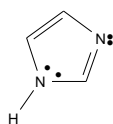
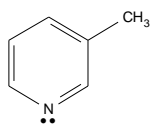


H				He
C	N	O	F	Ne
Si	P	S	Cl	Ar

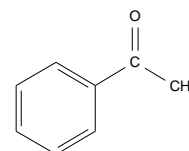
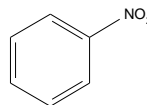
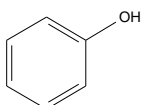
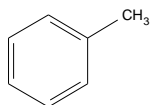
Name: _____

CHEM 20482 - Basic Organic Chemistry II - Spring 2009 Quiz #1 - 0 Points

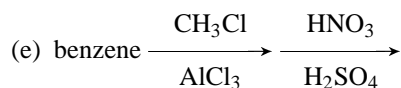
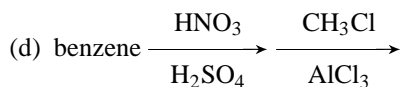
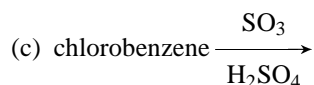
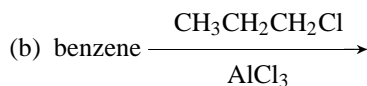
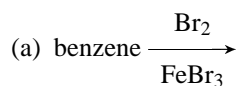
1. Indicate whether each of the following compounds IS or IS NOT aromatic.



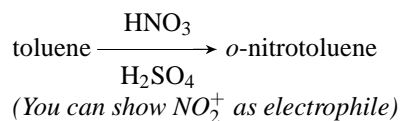
2. Indicate whether each of the following compounds activated or deactivated relative to benzene toward electrophilic aromatic substitution.



3. Draw structures for the major products expected from each of the following reactions.



4. Use the curved arrow formalism to show the mechanism for the following reaction. Circle the resonance structure(s) that explains why the ortho/para products are preferred for this reaction.



CHEM 20482 - Basic Organic Chemistry II - Spring 2009 Quiz #1 Key

1. Yes, Yes, No ($8 e^-$), No (not cyclic)
2. Activated, Activated, Deactivated, Deactivated
3. (a) bromobenzene
(b) isopropylbenzene (carbocation rearrangement occurs)
(c) *o*-chlorosulfonic acid and *p*-chlorosulfonic acid (Cl is deactivating, ortho/para-director)
(d) *m*-nitrotoluene
(e) *o*-nitrotoluene and *p*-nitrotoluene

