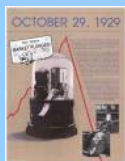


The Great Depression



1929-1933

- The biggest economic disaster in the United States in the 20th Century.

1929-1933

- The biggest economic disaster in the United States in the 20th Century.
- Not the biggest ever.

Organization

- What happened?
- Why did it happen?
- Why did recovery take so long?
- Could it happen again?

Impacts

- People's Lives
 - Everyone has stories to tell.
 - Dramatically touched lives.

Impacts

- People's Thinking
 - Marxism
 - Huey Long
 - Townsend Plan

Impacts

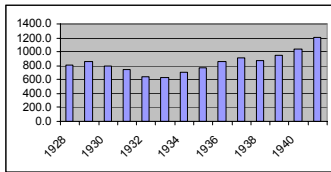
- Solutions
 - New Deal
 - National Recovery Act
 - Get Women out of Labor Force

The Decline in GDP

Year	GDP
1928	97.5
1929	103.6
1930	91.2
1931	76.5
1932	58.7
1933	56.4
1934	66.0
1935	73.3
1936	83.8
1937	91.9
1938	86.1
1939	82.2
1940	101.4
1941	126.7

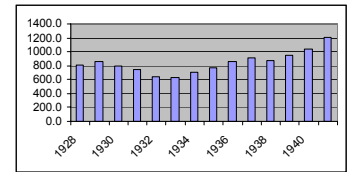
Decline in Real GDP (\$2000)

Year	GDP (2000\$)
1928	811.5
1929	865.5
1930	790.7
1931	739.9
1932	643.7
1933	635.5
1934	704.2
1935	766.9
1936	866.6
1937	911.1
1938	879.7
1939	950.7
1940	1034.1
1941	1211.1



Decline in Real GDP (\$2000)

Year	GDP (2000\$)
1928	811.5
1929	865.5
1930	790.7
1931	739.9
1932	643.7
1933	635.5
1934	704.2
1935	766.9
1936	866.6
1937	911.1
1938	879.7
1939	950.7
1940	1034.1
1941	1211.1



Components of GDP

Year	GDP	C	I	G
1928	811.5			
1929	865.5	661.4	91.3	120.6
1930	790.7	626.1	60.9	132.9
1931	739.9	606.9	38.3	138.5
1932	643.7	533.0	11.5	133.8
1933	635.5	541.0	17.0	129.2
1934	704.2	579.3	30.7	145.7
1935	766.9	614.8	56.9	147.9
1936	866.6	677.0	72.9	174.7
1937	911.1	702.0	91.1	167.3
1938	879.7	690.7	60.2	180.2
1939	950.7	729.1	77.4	196.0
1940	1034.1	767.1	107.9	201.5
1941	1211.1	821.9	131.7	335.1

Consumption

Year	GDP	C	I	G
1928	811.5			
1929	865.5	661.4	91.3	120.6
1930	790.7	626.1	60.9	132.9
1931	739.9	606.9	38.3	138.5
1932	643.7	533.0	11.5	133.8
1933	635.5	541.0	17.0	129.2
1934	704.2	579.3	30.7	145.7
1935	766.9	614.8	56.9	147.9
1936	866.6	677.0	72.9	174.7
1937	911.1	702.0	91.1	167.3
1938	879.7	690.7	60.2	180.2
1939	950.7	729.1	77.4	196.0
1940	1034.1	767.1	107.9	201.5
1941	1211.1	821.9	131.7	335.1

1929-1932:
Consumption
down by 20%

Consumption

Year	GDP	C	I	G
1928	811.5			
1929	865.5	661.4	91.3	120.6
1930	790.7	626.1	60.9	132.9
1931	739.9	606.9	38.3	138.5
1932	643.7	533.0	11.5	133.8
1933	635.5	541.0	17.0	129.2
1934	704.2	579.3	30.7	145.7
1935	766.9	614.8	56.9	147.9
1936	866.6	677.0	72.9	174.7
1937	911.1	702.0	91.1	167.3
1938	879.7	690.7	60.2	180.2
1939	950.7	729.1	77.4	196.0
1940	1034.1	767.1	107.9	201.5
1941	1211.1	821.9	131.7	335.1

The decline was gradual and recovery had taken place by 1936

1929-1932:
Consumption down by 20%

Investment

Year	GDP	C	I	G
1928	811.5			
1929	865.5	661.4	91.3	120.6
1930	790.7	626.1	60.9	132.9
1931	739.9	606.9	38.3	138.5
1932	643.7	533.0	11.5	133.8
1933	635.5	541.0	17.0	129.2
1934	704.2	579.3	30.7	145.7
1935	766.9	614.8	56.9	147.9
1936	866.6	677.0	72.9	174.7
1937	911.1	702.0	91.1	167.3
1938	879.7	690.7	60.2	180.2
1939	950.7	729.1	77.4	196.0
1940	1034.1	767.1	107.9	201.5
1941	1211.1	821.9	131.7	335.1

1929-1932:
Investment down by ~90%

Government

Year	GDP	C	I	G
1928	811.5			
1929	865.5	661.4	91.3	120.6
1930	790.7	626.1	60.9	132.9
1931	739.9	606.9	38.3	138.5
1932	643.7	533.0	11.5	133.8
1933	635.5	541.0	17.0	129.2
1934	704.2	579.3	30.7	145.7
1935	766.9	614.8	56.9	147.9
1936	866.6	677.0	72.9	174.7
1937	911.1	702.0	91.1	167.3
1938	879.7	690.7	60.2	180.2
1939	950.7	729.1	77.4	196.0
1940	1034.1	767.1	107.9	201.5
1941	1211.1	821.9	131.7	335.1

State and Federal

Nominal Dollars

Year	Federal	State
1928		
1929	1.7	7.6
1930	1.8	8.2
1931	1.9	8.0
1932	1.8	6.9
1933	2.3	6.4
1934	3.3	7.2
1935	3.4	7.5
1936	5.6	7.5
1937	6.1	7.7
1938	5.7	8.1
1939	6.0	8.8
1940	6.5	8.6
1941	18.0	8.6

More

Year	GDP Deflator	U	η
1928		4.2	
1929	11.98	3.2	0.0%
1930	11.54	8.9	-3.7%
1931	10.34	16.3	-10.4%
1932	9.12	24.1	-11.8%
1933	8.88	25.2	-2.7%
1934	9.37	22.0	5.6%
1935	9.56	20.3	2.0%
1936	9.67	17.0	1.1%
1937	10.08	14.3	4.3%
1938	9.79	19.1	-2.9%
1939	9.70	17.2	-1.0%
1940	9.81	14.6	1.2%
1941	10.47	9.9	6.7%

End

©2006 Charles W. Upton.
All rights reserved