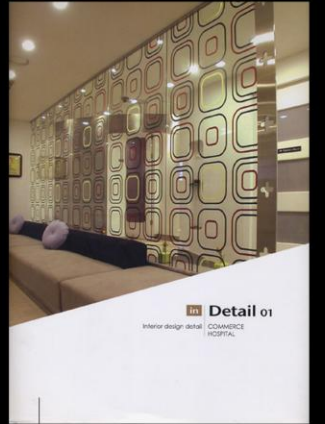
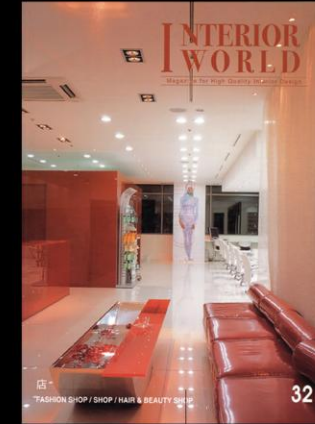
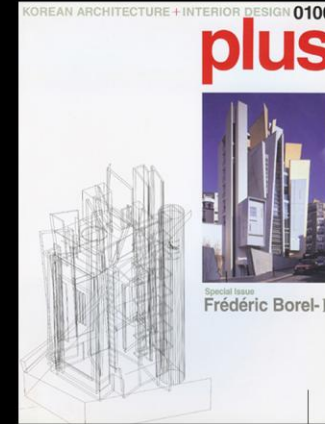
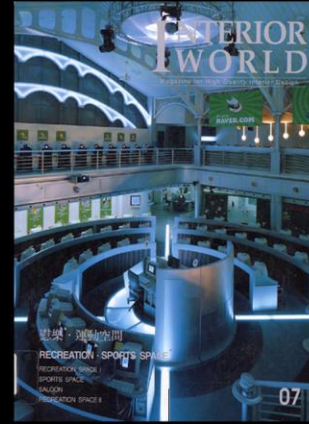
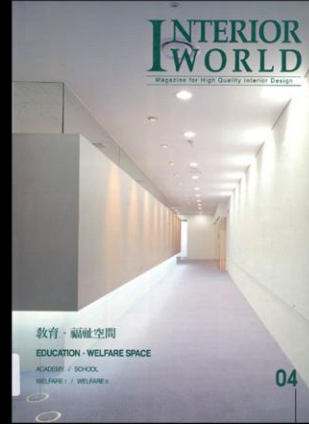
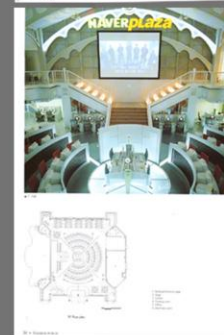


Creative Endeavor and Practice Publications

- Cho, J. Y. (2008). A Place Where Technology and Tradition Meet, *Journal of Interior Design*, 33 (3), 68-70.
 "Bean Pole Myeong Dong Flagship Store," *Interior World Fashion Shop & Hair Beauty Shop* (2004)
 "Lexington Hotel," *Interior Design Detail Commercial & Hospital* (2004)
 "Gwacheon Public Library of Information & Science," *Plus* (2003)
 "Seoul City Hall Main Conference Room" & "Naver Plaza," *Interior Architecture 1* (2001)
 "Naver Plaza," *Interior World Recreation & Sports Space* (2001)
 "Seoul City Hall Main Conference Room" & "KTF Customer Service Center," *Plus* (2001)
 "Seoul City Hall Main Conference Room" & "KTF Customer Service Center," *Space* (2001)
 "Service Academy" *Interior World Education & Welfare Space* (2000)
 "Service Academy," *Lighting & Interior* (2000)
 "SK Telecom TTL ZONE," *Interiors* (1999)



"Service Academy"
Interior World Education & Welfare Space
 Apr. 2000



"Naver Plaza"
Interior World Recreation & Sports Space
 Jul. 2001



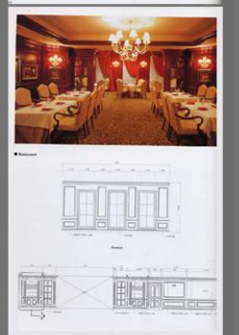
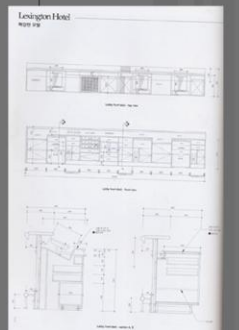
"Seoul City Hall Main Conference Room"
 & "KTF Customer Service Center,"
Space May. 2001



"Seoul City Hall Main Conference Room"
 & "KTF Customer Service Center,"
Plus June. 2001



"Bean Pole Myeong Dong Flagship Store,"
Interior World Fashion Shop & Hair Beauty Shop
 Sep. 2004



"Lexington Hotel,"
Interior Design Detail Commercial & Hospital
 Apr. 2004