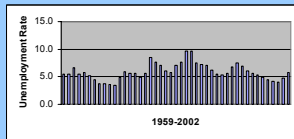


## BLS Unemployment Data



## Labor Force Participation Rates

<b>All civilian workers</b>	66.6%
<b>Males</b>	73.9%
<b>Females</b>	59.9%
<b>Both sexes 16-19 years</b>	47.6%
<b>White</b>	66.9%
<b>Black</b>	64.9%

## Labor Force Participation Rates

<b>All civilian workers</b>	66.6%
<b>Males</b>	73.9%
<b>Females</b>	59.9%
<b>Both sexes 16-19 years</b>	47.6%
<b>White</b>	66.9%
<b>Black</b>	64.9%

## Why Unemployed

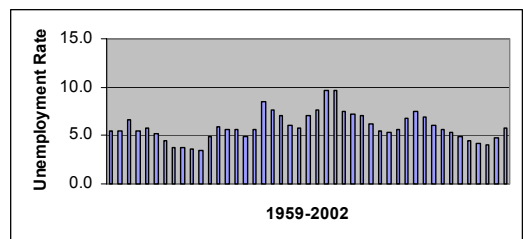
<b>Job Losers</b>	55%
<b>Layoff</b>	13%
<b>Other</b>	41%
<b>Job Leavers</b>	10%
<b>Reentrants</b>	28%
<b>New Entrants</b>	10%

### 2002 Unemployment Data

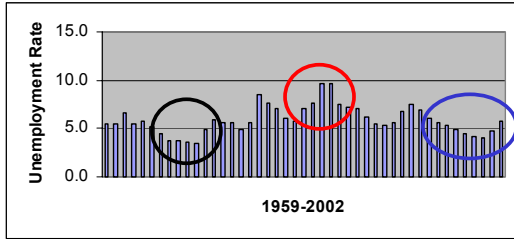
## Why Unemployed

<b>Job Losers</b>	55%
<b>Layoff</b>	13%
<b>Other</b>	41%
<b>Job Leavers</b>	10%
<b>Reentrants</b>	28%
<b>New Entrants</b>	10%

## U, 1959-2002



## U, 1959-2002



## U for different groups

<i>Unemployment Data for Different Groups, 2002</i>			
	<i>All Races</i>	<i>White</i>	<i>Black</i>
Total	5.8%	5.1%	10.3%
<i>Males</i>			
Total	5.9%	5.3%	10.7%
16-19 Years	18.0%	15.9%	31.5%
20 Years and Older	5.3%	4.7%	9.5%
<i>Females</i>			
Total	5.6%	4.9%	9.8%
16-19 Years	14.8%	13.0%	28.2%
20 Years and Older	5.1%	4.4%	8.9%

## U for different groups

<i>Unemployment Data for Different Groups, 2002</i>			
	<i>All Races</i>	<i>White</i>	<i>Black</i>
Total	5.8%	5.1%	10.3%
<i>Males</i>			
Total	5.9%	5.3%	10.7%
16-19 Years	18.0%	15.9%	31.5%
20 Years and Older	5.3%	4.7%	9.5%
<i>Females</i>			
Total	5.6%	4.9%	9.8%
16-19 Years	14.8%	13.0%	28.2%
20 Years and Older	5.1%	4.4%	8.9%

## U for different groups

<i>Unemployment Data for Different Groups, 2002</i>			
	<i>All Races</i>	<i>White</i>	<i>Black</i>
Total	5.8%	5.1%	10.3%
<i>Males</i>			
Total	5.9%	5.3%	10.7%
16-19 Years	18.0%	15.9%	31.5%
20 Years and Older	5.3%	4.7%	9.5%
<i>Females</i>			
Total	5.6%	4.9%	9.8%
16-19 Years	14.8%	13.0%	28.2%
20 Years and Older	5.1%	4.4%	8.9%

## U for different groups

<i>Additional 2002 Unemployment Data</i>	
Experienced Wage and Salary Workers	5.6%
Married Men, Spouse Present	3.8%
Women who Maintain Families	8.0%

## Searching

Year	Duration of unemployment				Mean (weeks)	Median (weeks)
	<5wks	5-14 weeks	15-26 weeks	>26wks		
1999	44%	31%	13%	12%	13.4	6.4
2002	35%	31%	16%	18%	16.6	9.1

## Searching

Year	Duration of unemployment				Mean (weeks)	Median (weeks)
	<5wks	5-14 weeks	15-26 weeks	>26wks		
1999	44%	31%	13%	12%	13.4	6.4
2002	35%	31%	16%	18%	16.6	9.1

## U for different nations

<i>1998-2001 Unemployment Rates for Different Countries</i>	
France	9.9
Japan	4.7
Germany	8.5
Italy	11.0
United Kingdom	5.7
Canada	6.8
United States	4.4

## U for different nations

<i>1998-2001 Unemployment Rates for Different Countries</i>	
France	9.9
Japan	4.7
Germany	8.5
Italy	11.0
United Kingdom	5.7
Canada	6.8
United States	4.4

## Job Gains

Year	Qtr1	Qtr2	Qtr3	Qtr4
1992		7233	7162	
1993	7511	7290	7383	7481
1994	7502	7761	7838	7682
1995	7858	7705	7873	8023
1996	7980	8111	8146	8267
1997	8305	8139	8608	8673
1998	8829	8739	8587	8482
1999	8804	8806	8938	9066
2000	8847	8723	8854	8680
2001	8474	8217	7898	7902
2002	8013	8010	7922	7746

## Job Creation, New and Old Business

Year	Qtr1	Qtr2	Qtr3	Qtr4
1992		5528	5504	
1993	5532	5757	5770	5876
1994	5880	6033	6121	6044
1995	6180	6020	6211	6287
1996	6262	6329	6285	6390
1997	6463	6386	6674	6674
1998	6668	6601	6600	6704
1999	6720	6803	6931	7046
2000	6938	6938	6930	6867
2001	6700	6413	6104	6083
2002	6200	6223	6208	6114

Year	Qtr1	Qtr2	Qtr3	Qtr4
1992		1705	1658	
1993	1979	1533	1613	1605
1994	1622	1728	1717	1638
1995	1678	1685	1662	1736
1996	1718	1782	1861	1877
1997	1842	1753	1934	1999
1998	2161	2138	1987	1778
1999	2084	2003	2007	2020
2000	1909	1785	1924	1813
2001	1774	1804	1794	1819
2002	1813	1787	1714	1632

## Job Creation and Destruction

Year	Qtr1	Qtr2	Qtr3	Qtr4
1992		7233	7162	
1993	7511	7290	7383	7481
1994	7502	7761	7838	7682
1995	7858	7705	7873	8023
1996	7980	8111	8146	8267
1997	8305	8139	8608	8673
1998	8829	8739	8587	8482
1999	8804	8806	8938	9066
2000	8847	8723	8854	8680
2001	8474	8217	7898	7902
2002	8013	8010	7922	7746

Year	Qtr1	Qtr2	Qtr3	Qtr4
1992		6957	6818	
1993	6977	6654	6674	6727
1994	6859	6881	6813	7068
1995	7028	7398	7200	7453
1996	7548	7517	7556	7440
1997	7482	7512	7732	8031
1998	8052	8062	7828	7863
1999	8403	8219	8186	8116
2000	8128	8189	8447	8379
2001	8755	8999	8978	8710
2002	8289	8091	7851	7816

## Job Creation and Destruction

Year	Qtr1	Qtr2	Qtr3	Qtr4
1992		7233	7162	
1993	7511	7290	7383	7481
1994	7502	7761	7838	7682

Year	Qtr1	Qtr2	Qtr3	Qtr4
1992		6957	6818	
1993	6977	6654	6674	6727
1994	6859	6881	6813	7068

**Conclusion: the labor market is dynamic**

Year	Qtr1	Qtr2	Qtr3	Qtr4
1998	8829	8739	8287	8482
1999	8804	8806	8938	9066
2000	8847	8723	8854	8680
2001	8474	8217	7898	7902
2002	8013	8010	7922	7746

Year	Qtr1	Qtr2	Qtr3	Qtr4
1998	8052	8062	7828	7863
1999	8403	8219	8186	8116
2000	8128	8189	8447	8379
2001	8755	8999	8978	8710
2002	8289	8091	7851	7816

Source for all data: Economic Report of the President

End

©2004 Charles W. Upton.  
All rights reserved